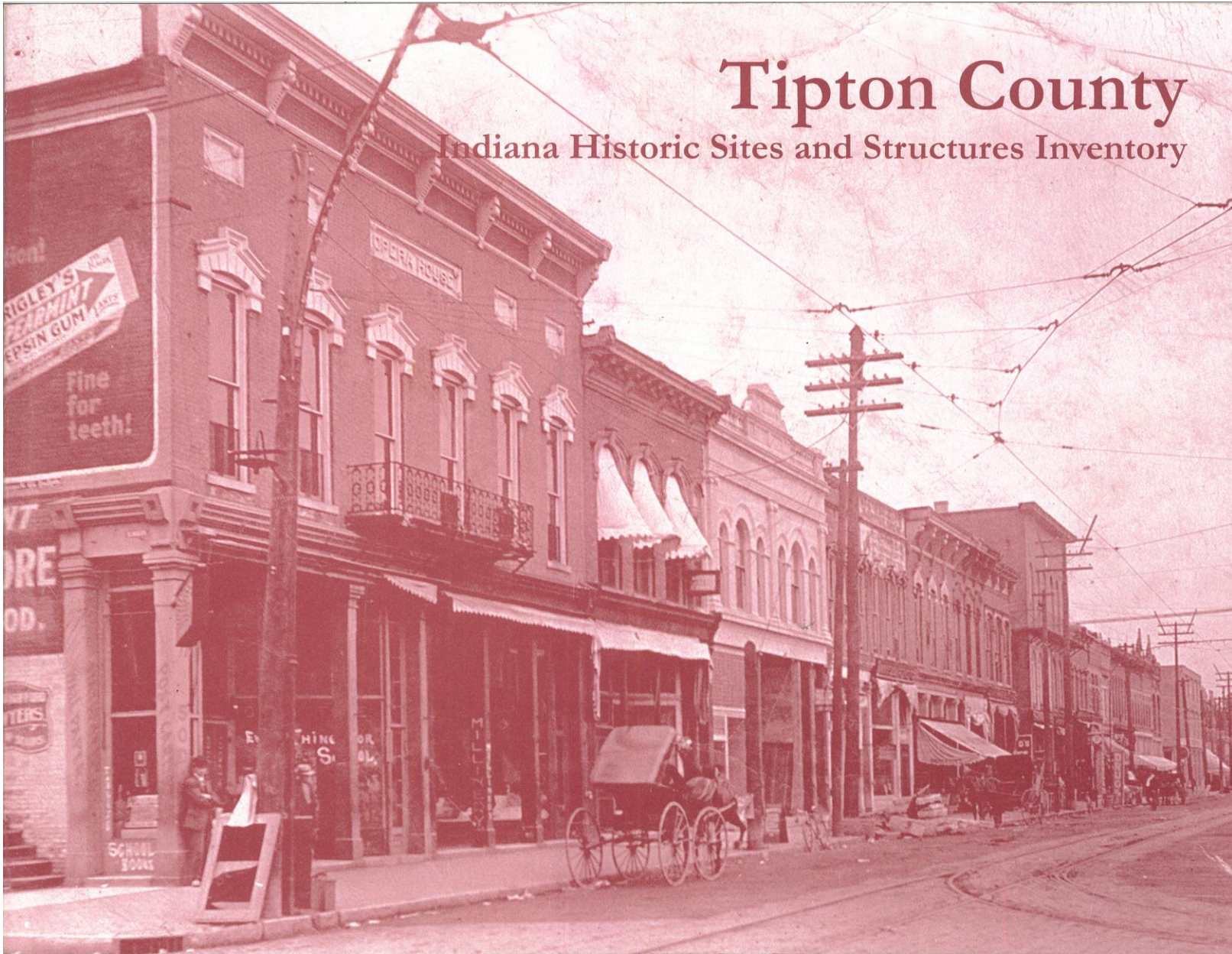


Tipton County

Indiana Historic Sites and Structures Inventory





15058 The Dunham family owned a large farm and William Dunham, the first owner of this c.1900 house, served in the Indiana General Assembly. In 2009 Dunham family relation Barack Obama was elected president of the United States.

- 053 O **Wheatly House**; 9730 SR 28; Free Classic; c.1900; Grain bin, machine shed, shed; *Architecture* (309)
- 054 C **House**; SR 28; T-plan; c.1880; Shed; *Architecture* (309)
- 055 C **House**; 10073 SR 28; T-plan; c.1860/c.1920; Garage, grain bin, machine shed, service station, shed; *Architecture, Commerce* (309)
- 056 C **Tipton County Bridge No. 9**; CR 1050 W over Wilbert Crum Ditch; T-beam; 1930; *Engineering, Transportation* (309)
- 057 C **House**; SR 28; T-plan; c.1910; Carriage house; *Architecture* (309)
- 058 N **Dunham House**; 709 S West St; Free Classic; c.1900; Milk house; *Architecture, Politics* (309)
- 059 C **House**; 11854 SR 28; Cross-plan; c.1910; Garage; *Architecture* (309)
- 060 C **Farm**; 2514 CR 1150 W; Dormer-front bungalow; c.1920; Machine shed, transverse-frame barn; *Agriculture, Architecture* (309)
- 061 C **Farm**; 3133 CR 1175 W; Dormer-front bungalow; c.1920; Machine shed, tool shed, transverse-frame barn; *Agriculture, Architecture* (309)
- 062 C **Farm**; 3560 CR 1100 W; Dormer-front bungalow; 1921; Garage, machine shed, transverse-frame barn; *Agriculture, Architecture* (309)

- 063 C **House**; 3798 CR 1100 W; Free Classic; c.1895; Pole barn; *Architecture* (587)
- 064 C **House**; 4029 CR 1100 W; I-house; c.1880; Tool shed; *Architecture* (587)
- 065 C **Farm**; 10644 CR 400 S; Dormer-front bungalow; c.1920; Corn crib, shed, transverse-frame barn; *Agriculture, Architecture* (587)
- 066 C **Farm**; 10209 CR 400 S; L-plan; c.1900; Grain bin, livestock barn, milk house, summer kitchen; *Agriculture, Architecture* (587)
- 067 C **Farm**; 9835 CR 400 S; T-plan; c.1900; Machine shed, privy, shed, transverse-frame barn; *Agriculture, Architecture* (587)
- 068 C **Farm**; S CR 975 W; Lazy-T; c.1910; Garage, machine shed; *Architecture* (587)
- 069 C **Farm**; 3485 S CR 975 W; L-plan; c.1890; Chicken house, English barn, quonset hut; *Agriculture, Architecture* (309)
- 070 C **Koker Farm**; 3008 S CR 900 W; Lazy-T; c.1910; Corn crib, machine shed, summer kitchen, wash house; *Architecture* (309)
- 071 C **House**; 8621 W CR 300 S; T-plan; c.1890; Garage; *Architecture* (309)
- 072 C **Farm**; 6717 W CR 250 S; T-plan; c.1910; Drive-thru corn crib, shed, summer kitchen, transverse-frame barn; *Agriculture, Architecture* (309)
- 073 C **Farm**; 3546 US 31; Italianate; c.1880; English barn, machine shed; *Agriculture, Architecture* (309)



15074 This I-house bears a Neoclassical, two-story front portico with a dentiled cornice and classical columns.



15076 The Smith House, Queen Anne in style, displays an ornately clad front gable with fishscale shingles, stick work, and decorative brackets.

- 074 O **House**; 6824 W CR 350 S; I-house/Neoclassical; c.1900; Garage; *Architecture* (309)
- 075 C **Tipton County Bridge No. 8**; CR S 725 W over Kigin Ditch; Concrete deck; 1900/1979 *Engineering, Transportation* (309)
- 076 O **Smith House**; 3662 S CR 725 W; Queen Anne; c.1900; Garage, pole barn, shed, tool shed; *Architecture* (309)
- 077 C **Farm**; 3687 S CR 725 W; California bungalow; c.1920; Bank/basement barn, garage, pole barn; *Agriculture, Architecture* (587)
- 078 N **House**; 4094 CR 700 W; Traditional ranch; 1961; *Architecture* (587)
- 079 C **Farm**; CR 400 S; T-plan; c.1890; Transverse-frame barn; *Agriculture, Architecture* (587)
- 080 C **Farm**; 45395 CR 975 W; T-plan; c.1880; Chicken house, dairy barn, garage, grain bin; *Agriculture, Architecture* (587)
- 081 C **House**; CR 1100 W; Pyramidal-roof cottage; c.1920; Machine shed, shed; *Architecture* (587)
- 082 C **Searcy Cemetery**; CR 450 S; 1872-1874; *Religion* (587)
- 083 C **Bridge**; CR 450 S; Concrete deck; c.1930; *Engineering, Transportation* (587)
- 084 C **Farm**; CR 600 S; T-plan; c.1910; Brooder house, drive-thru corn crib, garage; *Agriculture, Architecture* (587)